

Volumetric Feeder



BFS Model



BFH Model

Features of BFS and BFH

- Wide range of master batch dosing capacity with 4 different sizes of auger
- An even and consistent dosing rate
- Accurate and stable dosing because of the performance of the stepper motor having minimum rotation of 0.5 Degree to maintain a controllable speed within tolerance of 0.5 RPM
- Repeatability because of the stepper motor control
- Imported high torque stepper motor
- Versatility to run higher speeds for higher dosages
- Common control for injection mouldings, blow mouldings & extruders
- LCD display HMI with full numeric keypad for quick access to setting the parameter which reduces the change over time of master batch
- PLC based controller
- Capability to control two BFS motors with different time and RPM
- Onboard test / manual mode to reduce calibration time
- Low power consumption control design
- Very user friendly control, easy to use
- Bigger size of hopper with carbon steel construction and PU painted

Economical feeding of colorants, additives

Conair feeders provide injection molders and extruders with a versatile, economical way to volumetrically meter colorants or other additives into the flow of virgin material directly at the throat of the processing machine.

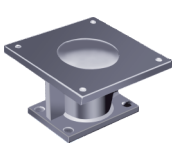
By metering additives directly at the throat, greater savings in material inventory and colorant can be achieved over traditional pre-colored or centrally blended material schemes.



Control panel for BFS and BFH

Optional Features

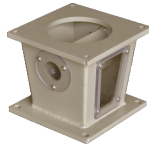
- Offset intermixer
- Hopper level sensor which gives the alarm when master batch level goes below predefined minimum level in the hopper
- Auto loader is available to keep filling master batch automatically
- Adaptor plates for throat mounting as per dimensions provided by the customer
- In extrusion processes, signal converters are available to synchronize extruder VFD control signals with the feeder's control PLC



Adaptor plate

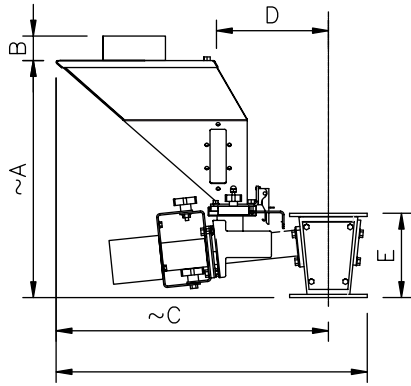


Offset intermixer
3" & 5"

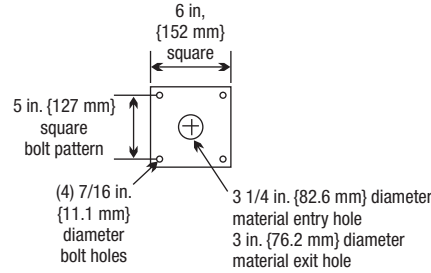


5" block

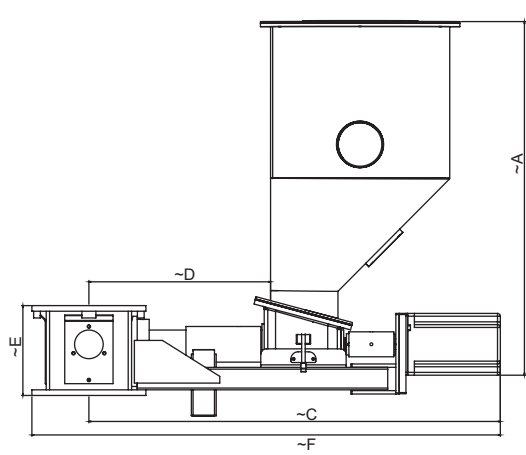
BFS



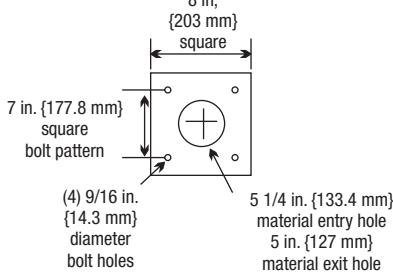
BFS augers



BFH



BFH augers



Specifications of BFS Augers

Code	Description	Dosing capacity Kg/hour	Dosing capacity Gram/sec.
Auger1	3/8 x 1/4	0.04 to 3.6	0.011 to 1
Auger2	3/8 x 3/8	0.07 to 7	0.019 to 1.94
Auger3	1/2 x 1/2	0.2 to 10.9	0.058 to 3.028
Auger4	3/4 x 3/4	0.5 to 33	0.138 to 9.166
Auger5	1 x 1	0.5 to 73	1.1 to 20

Hopper Capacity (liters)	18	
Feeder Dimensions (mm)	6"	8"
A	475	480
B	150	150
C	455	490
D	220	270
E	165	180
F	540	590
Feeder Weight (kg)	19	25
Control Panel Dimensions (mm)		
Height	360	
Width	210	
Depth	170	
Supply Voltage (50/60 Hz)	230V	
Total Running Amps	1A	

*Refer electrical wiring drawing for any optional feature.
All specifications are subject to change without prior notice.

Specifications of BFH Augers

Code	Description	Dosing capacity Kg/hour	Dosing capacity Gram/sec.
Auger1	2 x 2	21.24 to 400	5.9 to 111
Auger2	1-1/2 x 1-1/2	9.36 to 176.4	2.6 to 49
Auger3	1 x 1	2.9 to 54	0.81 to 15

Hopper Capacity (liters)	17.2	
Feeder Dimensions (mm)	6"	8"
A	630	630
C	743	768
D	315	325
E	158	158
F	832	845
Feeder Weight (kg)	27.7	27.7
Control Panel Dimensions (mm)		
Height	530	
Width	300	
Depth	175	
Supply Voltage (50/60 Hz)	230V	
Total Running Amps	4A	

*Refer electrical wiring drawing for any optional feature.
All specifications are subject to change without prior notice.

Joint Venture with The Conair Group, USA
A World Leader in Plastic Auxiliary Equipment Manufacturing



(An ISO 9001:2015 Certified Organization)

Nu-Vu Conair Pvt. Ltd.

Plot No. 147, 148 & 154, Devraj Industrial Park, Piplaj-Pirana Road, Piplaj, Ahmedabad - 382405, Gujarat, India

☎ +91 79 2970 8147 | ☐ +91 97129 28201, +91 90990 76206

✉ marketingindia@conairgroup.com | 🌐 www.conairgroup.com/india

📘 www.facebook.com/nuvuconair