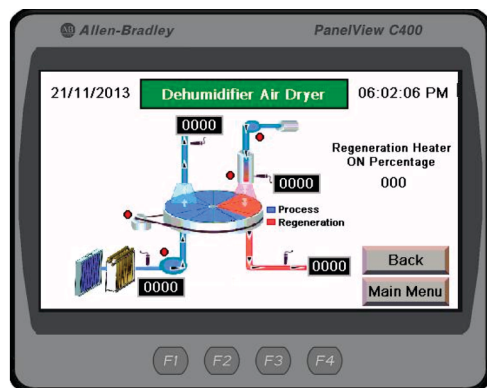


Mould Space Dryer

MS - Series



Mould Space Dryers are used to maintain the surrounding area of mould with lower dew point temperature which will help in preventing sweating on the mould irrespective of atmospheric environment.

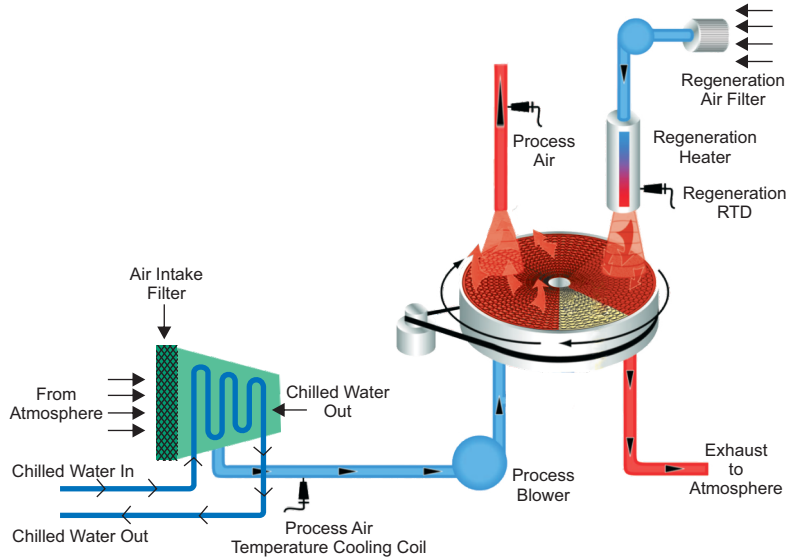
Mould Space Dryer generate and supply low dew point air into the closed enclosure around mould of processing machine which will reduce the dew point temperature of surrounding area of mould.

Without mould space dryer, there will be water condensation on the mould which leads to:

- reduced productivity due to increase in cooling time and overall cycle time
- improper quality of parts
- blockage of cavities
- reduced life of the expensive mould

Standard Features

- Specially designed Finned & Tube Heat Exchanger suitable for Indian / critical environment condition
- Air intake filter for both process & regeneration circuit
- Fluted Desiccant Rotor wheel assembly with continuous drying and regeneration circuit
- High air flow across the surface area of rotor
- Touch screen operator interface panel
- PLC based control
- Audio & visual alarm
- Display of process air outlet temperature
- Imported centrifugal blowers with Aluminum die cast impeller suitable for high static pressure
- Inbuilt under voltage / over voltage / phase sequence / voltage unbalance protection
- Accessibility from both the sides for easy maintenance
- PID temperature control for regeneration heater
- Solid state relay for regeneration heater for long life
- Dew point monitoring kit (optional)
- Piping kit – flexible / fixed metal (optional)



Technical Specifications

Model	MS 1	MS 1.5	MS 2	MS 4
Performance Characteristics				
Air Flow M³/Hr (CFM)**	400 (235)	600 (353)	1200 (705)	2400 (1411)
Process Air Static Pressure Wc" (Pa)	2.4" (600 Pa)	1.5" (373 Pa)	2" (500 Pa)	
Rated Air Outlet Dew Point** at 100 Deg. Cel. of Regeneration	Plus (+) 1.6 Degree Celsius			
Rated Air Outlet Dew Point** at 140 Deg. Cel. of Regeneration	Minus (-) 3.0 Degree Celsius			
Process Air Outlet Temperature Degree Celsius	30			
Standard Process Blower KW	0.51		0.62	5
Standard Regeneration Blower KW	0.19		0.51	
Regeneration Heater KW	7.5		15	30
Voltage	415V, 50 Hz, 3 Phase			
Connected Load KW	8.2		16.13	33.62
Control Voltage	24V DC			
Dimension W x D x H (mm)				
W - Width	750	1020		1230
D - Depth	1550	1880		2550
H - Height	2100	2110		2080
Process Connections				
Process Delivery Size Ø Inch (mm)	5 (127)		8 (203.2)	12 (304.8)
Regeneration Delivery Size Ø Inch (mm)	2.5 (63)		5 (127)	8 (203.2)
Water Requirements (Customer Scope of Supply)				
Chiller Capacity Require KW (TR)	8.9 (2.5)		26.65 (7.5)	53.3 (15.1)
Temperature Degree Celsius	7.2			
Recommend Model of Chiller	ECW 5 / ECA 6	ECW 7 / ECA 7	ECW 8 / ECA 8	ECW 17 / ECA 24
Flow Rate M3 / Hr (LPM)	2 (32)		6 (96)	11.5 (191)
Chilled Water Inlet / Outlet Connection	1" BSP Female		1 1/2" BSP Female	
Weight Kg				
Installed (NET)	225		260	450
Color	Black RAL 9005 / Siemens Grey RAL 7032			

All specifications are subject to change without prior notice.

**Considering ambient condition: 35 degree celsius & 63% relative humidity.

Joint Venture with The Conair Group, USA
A World Leader in Plastic Auxiliary Equipment Manufacturing



(An ISO 9001:2015 Certified Organization)

Nu-Vu Conair Pvt. Ltd.

Plot No. 147, 148 & 154, Devraj Industrial Park, Piplaj-Pirana Road, Piplaj, Ahmedabad - 382405, Gujarat, India
☎ +91 79 2970 8147 | ☎ +91 97129 28201, +91 90990 76206
✉ marketingindia@conairgroup.com | 🌐 www.conairgroup.com/india
📘 www.facebook.com/nuvuconair