

EarthSmart™ Chiller

(Water Cooled)



- All chilled water contact surfaces are non ferrous for protection against corrosion. All wetted surfaces are stainless steel, copper or other non ferrous material
- Proven component suppliers like Danfoss, Copeland, Grundfos, Siemens have been chosen for ultimate reliability
- Tool free access panels and a neatly organized internal component layout provide easy access and service. Simply remove the panels to gain access to the entire cabinet of the chiller
- All chillers are factory tested under load prior to shipment
- Shell and Tube Condenser – high surface area with externally finned copper tube designed for Indian ambient condition
- Brazed Plate Evaporator / Shell and Tube Evaporator – provide higher heat transfer coefficients due to reduced fouling
- Evaporator Strainer - protects the evaporator from solid contaminants in the process water stream
- Condenser Water Strainer - helps to protect the condenser from solid contaminants in the condenser water

New EP2W series portable chillers are quality engineered for year - round, 24 / 7 operation under demanding industrial applications. Combining a compact design, durable construction and a new control platform, EP2W chillers will provide maximum cooling for your application.

EP2W series chillers have cooling capacity of 2.5 TR to 100 TR with operating temperature of 8°C to 25°C in condenser water temperature (cooling tower water) of 30°C.

Unique Features

- Microprocessor / PLC based control
- Energy efficient & reliable scroll compressor with hermetically sealed suction gas cooled motor
- High performance, low maintenance system with switching cycle control
- Crank case heater to prevent liquid migration of refrigerant in compressor
- Filter dryer to ensure moisture free system
- Sight glass with moisture indicator
- Large size stainless steel insulated tank to prevent heat loss
- Dry running protection of pump by water level sensor in the tank
- Water re-feeding valve to maintain level in the tank automatically
- Antifreeze thermostat for protection of evaporator and compressor
- High volume, high pressure pump with stainless steel impeller
- Inbuilt process water bypass with valves

Technical Specifications

Model	EP2W 2	EP2W 3	EP2W 4	EP2W 5	EP2W 6	EP2W 7	EP2W 8	EP2W 10	EP2W 12	EP2W 15	EP2W 17	EP2W 24	EP2W 30	PCW 40	PCW 50	PCW 60	PCW 75	PCW 100		
Performance Characteristics																				
Nominal Capacity * KW (TR)	9.4 (2.7)	12.2 (3.47)	17.6 (5)	20.47 (5.82)	22.66 (6.44)	28.28 (8)	36.7 (10.43)	43.8 (12.4)	47.2 (13.4)	55.1 (15.67)	75 (21.3)	97 (27.5)	115 (32.7)	150 (43)	194 (55)	230 (65.5)	291 (82.7)	345 (98)		
Compressor Quantity / KW	1 / 2.35	1 / 2.2	1 / 3	1 / 3.8	1 / 3.98	1 / 5.17	1 / 6.56	1 / 8.05	1 / 8.89	1 / 10.2	1 / 14.15	1 / 18.05	1 / 21.5	2 / 14.05	2 / 18.1	2 / 21.5	3 / 18.1	3 / 21.5		
Refrigerant	R22																			
Standard Evaporator Pump KW	0.37	0.85		1.2		2.2						4		5.5		7.5	3 x 1.2	3 x 2.2		
Maximum Flow to Evaporator LPM	50	105				230						380		480	645	880	3 x 230	3 x 380		
Maximum Pressure Bar	2	3.7		4.6		4.8						5.3		5.6	4.4	4.5	3 x 3.2	3 x 2.8		
Water Reservoir Capacity Liters	40	94.6				150		205				300		500		900		1200		
Dimension (mm)																				
W - Width	700	840						1160						1370			1760			
D - Depth	900	1250				1510		1950						2250			2750			
H - Height	1270	1450						1660				1800								
Process Connections																				
Process Connections In / Out – BSP	1"					1 1/2"							2"		2 1/2"			1 1/2" x 3 Nos.		
Condenser Water Cooling Capacity Require TR	4	5	7	9		12	15	18	20	23	32	41	49	66	82	96	133	151		
Condenser Water Flow Rate LPM	53	65	92	109	119	150	194	232	251	292	400	515	611	834	1028	1214	1673	1898		
Condenser Water In / Out – BSP	1"	1 1/4"								1 1/2"			2"		1 1/2" x 2 Nos.		2"	2" x 3 Nos.		
Weight (Installed Kg)	125	350				699		750		825	880	920	1250	1800		1900	2750			
Voltage / Connected Load KW																				
Voltage	415 V, 50 Hz, 3 Phase																			
Connected Load	2.72	4.32	3.85	5	5.18	7.37	8.76	10.25	11.09	12.4	16.35	20.25	25.5	33.5	41.7	48.5	57.9	71.1		
Control Voltage	24 V DC																			
Control Range in Degree Celsius	Plus (+) 8 to Plus (+) 25																			
Water Quality	Pure DM water – Conductivity < 10-30 µs/cm																			
Color	Black RAL 9005 / Siemens Grey RAL 7032																			

All specifications are subject to change without prior notice.

* Capacity based on supplying 15°C water to process and 30°C condenser water temperature.

Standard Control Features

- Conair make with low switching frequency of compressor by intelligent program
- Display of set value and actual temperature on screen
- 3-phase monitor protects against unit damage due to phase reversal or loss of phase
- Display of compressor and pump running hours helps with maintenance scheduling
- Start-to-start anti-cycler timer prevents short-cycling of compressor while minimizing off periods
- Adjustable deviation alarm timer delay to prevent nuisance alarm during start-up
- Display temperature easily switched from °F to °C
- Vibrating pad
- Master reset function to restore factory defaults
- Inbuilt freeze protection safety in control to safeguard evaporator
- Suction and discharge refrigerant gauges
- Automatic water make up valve

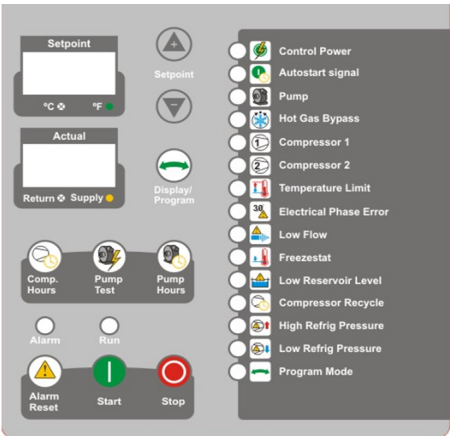
Optional Control Features

- Process water flow meter
- SPI, ModBus RTU, BACnet, and LonWorks communication capability

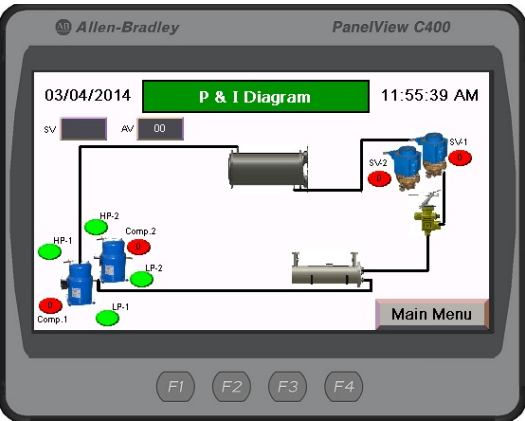
Refrigerant Options: R 22 - Standard / R 134a / R 407c

Options

- Remote control option
- Water pressure gauge
- Water flow meter
- Solenoid valve & NRV for overhead plumbing
- Modbus / Ethernet communication
- Tankless / Pumpless kits
- Condenser water flow regulator



EP2 - Series



PCW - Series

Joint Venture with The Conair Group, USA
A World Leader in Plastic Auxiliary Equipment Manufacturing



(An ISO 9001:2015 Certified Organization)

Nu-Vu Conair Pvt. Ltd.

Plot No. 147, 148 & 154, Devraj Industrial Park, Piplaj-Pirana Road, Piplaj, Ahmedabad - 382405, Gujarat, India

☎ +91 79 2970 8147 | ☐ +91 97129 28201, +91 90990 76206

✉ marketingindia@conairgroup.com | 🌐 www.conairgroup.com/india

📘 www.facebook.com/nuvuconair