

Carousel Plus Dryers

W - Series



Unique Features

- State-of-the-art Desiccant Rotor technology
- Rock steady dew point at - 40°C. No spikes
- Energy saving - Much lower cost due to lower regeneration
- Linear air flow across the surface area of rotor
- Tabular, low resistance wire heaters increase response time
- Audible and Visual alarm
- Display of return air temperature
- Operator password protection
- Easy and simple maintenance - minimal moving parts
- Precise (+/- 3 degree) adjustable dew point control (option)
- Temperature Setback to reduce energy consumption when machine throughput is reduced or stopped
- In built Return Air Aftercooler
- Uniform mass material flow ensure that each pellet is dried
- Even air / heat distribution throughout the dryer
- Insulated side wall maintain temperature at desired level
- Smooth interior surface
- Efficient drying with minimum down time
- Quick-clean design in drying hopper
- Large hinged doors for easy cleaning
- Removable spreader cones makes cleaning fast and easy
- Strip sight glass for viewing material level within the hopper
- Capabilities to offer Central dryer with multiple drying hoppers for multiple resin or quick change over of different material

How it works

The core of the Carousel Plus dryer is the Munters unique fluted desiccant rotor, which contains molecular sieve desiccant. The molecular sieve has been grown into the rotor's porous fiberglass substrate, preventing the possibility of desiccant breakdown and dusting over time. The desiccant rotor revolves slowly at the rate of 12 revolutions per hour passing through three cycles with each revolution.

Optional Features

- Volatile trap
- Pre-cooler
- Pneumatic Slide Gate Valve
- Butter Fly Valve at Hopper outlet
- Magnet drawer



DC-1 CONTROL FEATURES

- Six character, seven segment LED display for high visibility of set point and actual operating parameters
- Full access to setup parameters and alarms through error codes
- Autostart countdown timer
- Operator password protection
- English / Metric units
- Solid-state heater contactors with isolation protection
- Return air temperature display

Optional Features

- Dew point monitor / control
- Filter check

Optional TouchView Technology is available with Allen-Bradley Platform

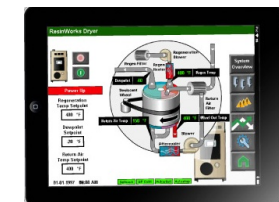
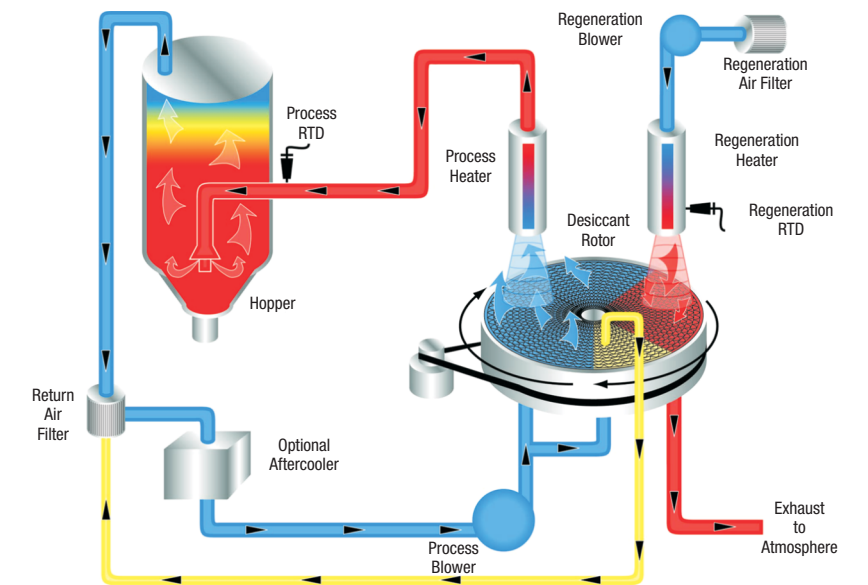
Technical Specifications

Model	W50	W75	W100	W150	W200	W300	W400	W600	W800	W1000	W1300	W1600	W2000
Dry Air Quantity (M3/Hr)	50	75	100	150	200	300	400	600	800	1000	1300	1600	2000
Drive Power (KW)	0.22	0.38	0.75	1.5	1.5	3	3	7.5	7.5	7.5	7.5	7.5	7.5
Regeneration Heater (KW)	2	2	2	4	4	8	8	15	15	15	30	30	30
Total Connected Load (KW)*	2.62	2.62	3.07	6	6	11.4	11.85	24.1	24.7	24.7	38.25	41.75	41.75
Dimension (mm) - Height	1700	1700	1700	1788	1788	1788	1788	2278	2278	2278	2423	2423	2423
- Width	750	750	750	750	750	750	750	1100	1100	1100	1227	1227	1227
- Depth	1100	1100	1100	1300	1300	1300	1300	1600	1600	1600	2179	2179	2179
Approx Weight (KG)	230	230	234	278	291	320	400	678	680	685	726	726	726

All specifications are subject to change without prior notice.

* Total connected load excluding process heater.

We can supply up to 5000 M³/hr dryers.



DC-T CONTROL FEATURES

- 8-inch color touch screen
- Web-enabled
- Trending-air temperature and dew point
- English/Metric units
- Return air temperature display
- Real-time clock-time of day
- Date format selection
- Auto start
- Temperature setback
- Solid-state heater contactors with isolation protection
- Multiple hopper control

Joint Venture with The Conair Group, USA
A World Leader in Plastic Auxiliary Equipment Manufacturing



(An ISO 9001:2015 Certified Organization)

Nu-Vu Conair Pvt. Ltd.

Plot No. 147, 148 & 154, Devraj Industrial Park, Piplaj-Pirana Road, Piplaj, Ahmedabad - 382405, Gujarat, India
 ☎ +91 79 2970 8147 | ☎ +91 97129 28201, +91 90990 76206
 ✉ marketingindia@conairgroup.com | 🌐 www.conairgroup.com/india
 📘 www.facebook.com/nuvuconair